

2  1  1 

Uphill & Schaefer Real Estate
0267721200

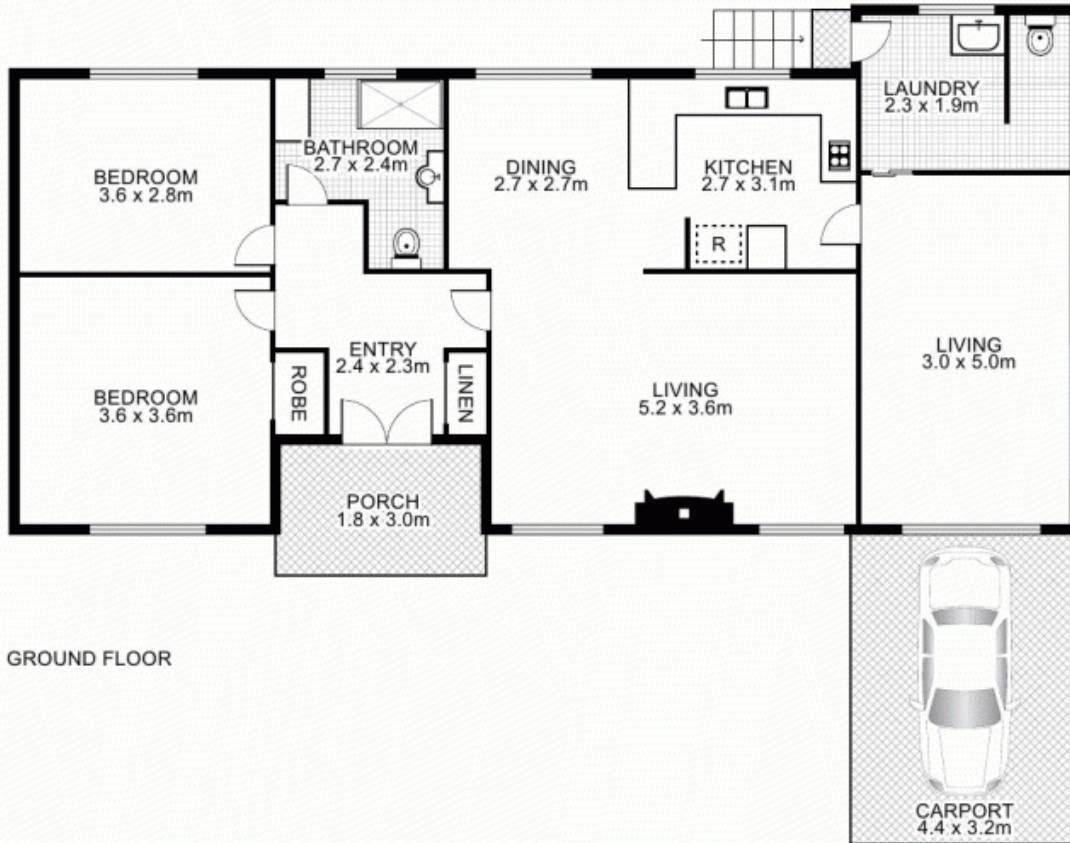
Contact Julie Schaefer
0408 200 668

Type House

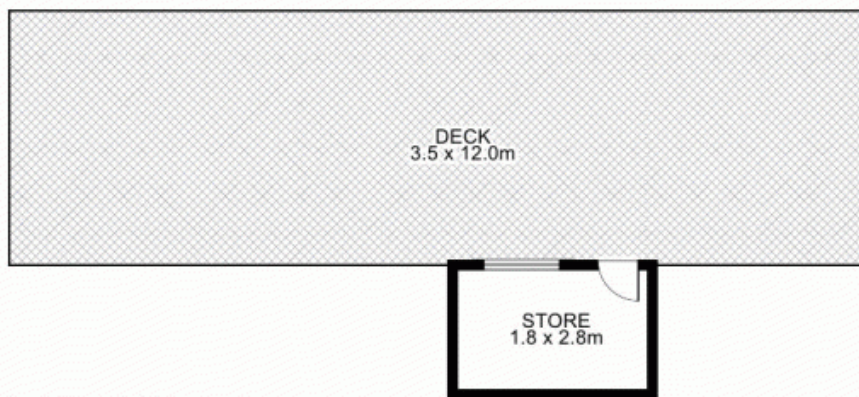
2 Quin Avenue ARMIDALE, NSW **'WOW' GREAT VIEWS**

Fantastic views & still walking distance to the Armidale's business district. Positioned at the end of a quiet cul-de-sac, this weatherboard home has been immaculately maintained. Two living areas with a northerly aspect and are separated by the kitchen/dining areas. Easy care bathroom & 2nd toilet off the laundry. Good sized rear yard with large deck & access to two storage rooms (one being the old laundry). Worthy of an inspection if you are wanting to be close to the CBD.

2 Quin Avenue, ARMIDALE



GROUND FLOOR



LOWER GROUND FLOOR



Plans by
surroundpix
com.au
1300 30 32 40

This floor plan is intended as a guide only. Layout dimension are approximate only. No representation or warranties of any nature whatsoever are given or intended. Any person using this information should rely on their own enquiries.