



3  1  3 

Uphill & Schaefer Real Estate
0267721200

190 Canambe Street Armidale, NSW
So Much to Offer

Be the one to enjoy the benefits of all the hard work that has been done to this property. The features include:

Contact Gail Schaefer
0412 410 949

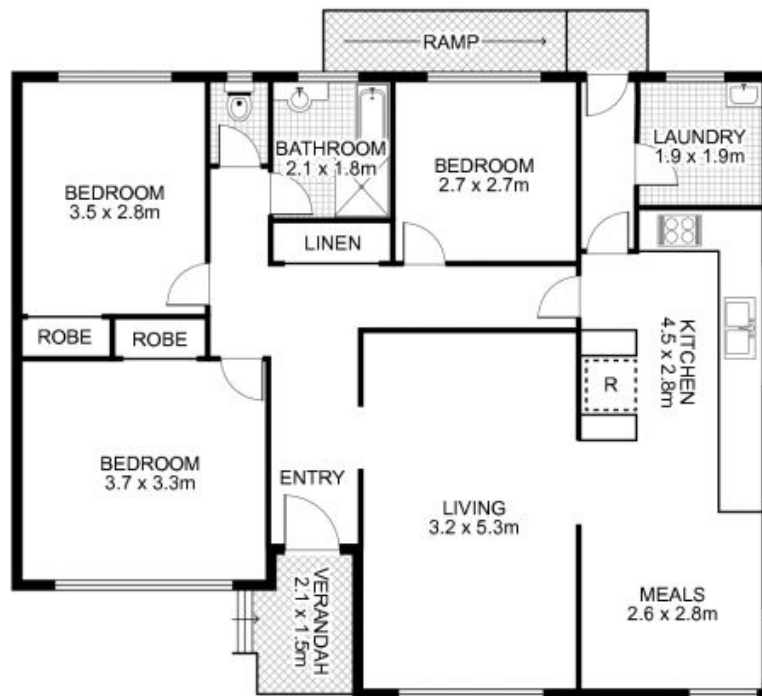
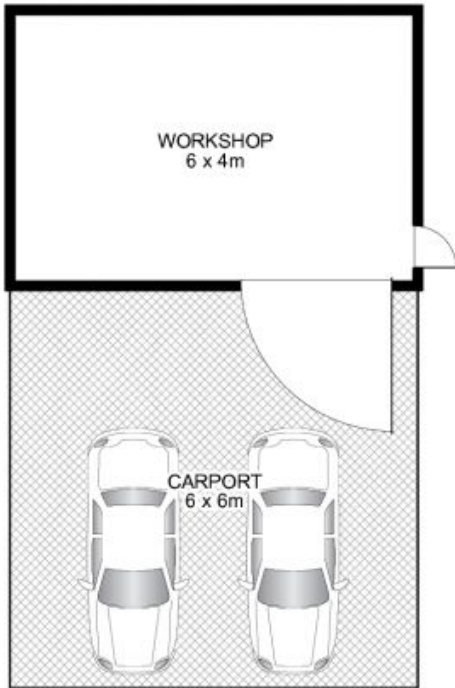
Type House

Land 797Square Metres

Polished timber floors
Three spacious bedrooms
Recently repainted throughout
New curtains, doors & light fittings
Tastefully renovated kitchen with gas cooktop & dishwasher
Gas heating
Laundry freshly painted & tiled
Fully enclosed yard
Established and private front yard
Additional improvements to the property including the enormous carport & shed/workshop with mezzanine level for added storage.

This solid weatherboard home is the perfect starter home you would be proud to own or add it to your investment portfolio.

Priced to sell at \$289,000.



190 Canambe Street, ARMIDALE



uphillschaefer

This floor plan is intended as a guide only. Layout dimensions are approximate only. No representations or warranties of any nature whatsoever are given or intended. Any person using this information should rely on their own enquiries. Floor Plans by SURROUNDPIX.