



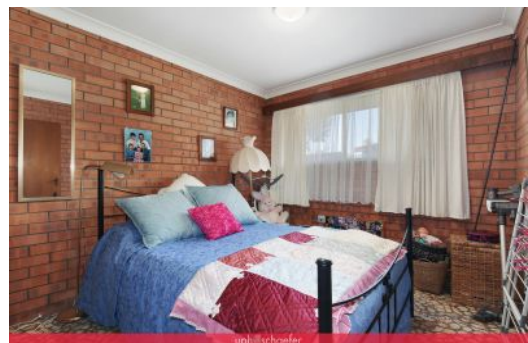
uphillschaefer



uphillschaefer



uphillschaefer



uphillschaefer

4  2  2 

**Uphill & Schaefer Real Estate**  
**0267721200**

**227 Canambe Street Armidale, NSW**  
**Duel Income Low maintenance**

With the current markets around the world it is nice to know you could have a secure investment.

With this solid low maintenance double brick duplex, you could have piece of mind.

2 x 2-bedroom units, all with built-in robes, lock-up garage, reverse cycle air/con. Electric kitchen, sunny north facing living/dining areas.

Current rental return \$455 per week Council rates approx. \$2,897 pa Uphill & Schaefer Real Estate have a professional Property Management Team to assist with your investment.

**Contact** Julie Schaefer  
0408 200 668

**Type** Unit

**Land** 860Square Metres

[www.uphillschaefer.com.au](http://www.uphillschaefer.com.au)

1/227 Canambe Street, ARMIDALE



uphillschaefer

JP MEDIA

This floor plan is intended as a guide only. Layout dimensions are approximate only. No representations or warranties of any nature whatsoever are given or intended. Any person using this information should rely on their own enquiries. Floor Plans by JP Media.